



MidsommarFest2011

17,18,19 June, Friday, Saturday & Sunday
Free Souvenir Calendar, Guide, and Map

Maine Swedish Colony:
New Sweden, Westmanland,
Madawaska Lake, Stockholm,
Woodland, Perham, Connor & Caribou
www.MaineSwedishColony.info



MONICA'S SCANDINAVIAN IMPORTS

176 Sweden St.
Caribou, ME 04736
207-493-4600

Monday-Saturday
10:00 AM – 5:30 PM
info@MonicasImports.com
• Clogs • Jewelry
• Table Linens

- Swedish Specialty Foods
- Scandinavian Sweaters
- Crystal Dinnerware
- Platinum Trollbeads Dealer
- Bridal Registry

Need a
Physician?
Call 1-800-371-6240



Healthcare You Can Trust For A Lifetime

Pines Health Center: Caribou	498-2356
Family Health Center: Presque Isle	769-2025
St. John Valley Health Center: Van Buren	868-2796
Loring Health Center: Limestone	328-4631
Center for Women's & Children's Health: Caribou	
Pediatrics 492-3451	OB/GYN 498-6921
Occupational Medicine - Company MD:	
Presque Isle 769-2025	Limestone 328-4631
Ophthalmology Services: Caribou	496-6851
Surgical Services: Caribou	498-2595
Urology Services: Caribou	498-8678

Bringing a Higher Level
of Healthcare



CARY
MEDICAL CENTER

163 Van Buren Rd. • Caribou, ME 04736
498-3111 • FAX 496-2631
www.carymedicalcenter.org

A Tradition of Community Healthcare

Cary is an equal opportunity provider



*Northern Maine
Development
Commission helps
businesses and
communities grow
throughout the northern
Maine region.
We provide federal and
state services at the
regional and local levels.*

*Call today to get started
in the right direction.*



Northern Maine Development Commission

11 West Presque Isle Road • PO Box 779 • Caribou, ME 04736
Phone: 207-498-8736 • Toll Free in Maine: 800-427-8736 • Fax: 207-493-3108

www.nmdc.org

*Watch for coverage
of the*

MIDSOMMAR FESTIVAL

in the

**AROOSTOOK
AND
REPUBLICAN
NEWS**

159 Bennett Drive, PO Box 608, Caribou, ME 04736

Phone: (207) 496-3251 • Fax: (207) 492-4351

E-mail: republican@nepublish.com

Monday - Saturday 9AM – 5 PM,
MOST SUNDAYS 12-4
Annuals • Perennials • Herbs • Veggies
Shrubs • Trees • Arrangements
7 mi N. of Caribou on Rt. 161
207-492-44162



Down To Earth Gardens

Delivering on
A promise.SM



Dead River
Company

BARRETT
ENVIRONMENTAL
AND EDUCATIONAL
FOUNDATION

GULD MIDSOMMAR PARTNER



Lynn Johnson
Swedish Ancestor
Research for all of
Aroostook

newswedengenealogy@gmail.com
Guld Midsommar Partner



MAHONEY
REAL ESTATE, INC.

Martha J. Mahoney, Broker 1-800-488-6571 Toll Free
Graydon M. Mahoney, Broker 207-498-6571 Office
154 High Street, P.O. Box 38 207-492-3231 Home
Caribou, Maine 04736 207-492-9281 Fax

www.MahoneyRealEstate.net
Mahoney@MahoneyRealEstate.net

Russell's
Motel

357 Main Street
Caribou, Maine 04736



207-498-2567
Donna Murchison
- Inn Keeper
Visa, Mastercard,
Amex, Discover
Air Conditioned
Cable TV
Wireless Internet
Easy access to ITS 83A



russellsmotel@maine.rr.com
ConnectMaine.com/Russells



Simply Scandinavian

SimplyScandinavian.com
info@SimplyScandinavian.com
75 Market St.
Portland, ME 04101-5031
207-874-6768 • 888-534-9712

Caribou Area Chamber of Commerce



CCC

"Caribou Cares About Kids"

207-498-6156~www.cariboumaine.net ~ccci@cariboumaine.net

New location at:
The Nylander Museum
657 Main Street
Caribou, ME 04736

Next Year's
MidsommarFest
Friday 22
June, 2012

MidsommarFest 2012
Maine Swedish Colo-
ny; plan to attend;
FMI: Debbie Eustis-
Grandy, 207-896-5240;
Host: New Sweden
Historical Society

Places to stay

Within the Colony

- * Fieldstone Cabins and RV Park, Madawaska Lake
- * Up North Cabins, New Sweden (+camping & trailer sites) 207-896-3328
- * Paul Bondeson camping, New Sweden, 207-896-5553

Caribou

- (about 10 minutes south of New Sweden)
- * Old Iron Inn B&B, 207-492-4766, 4 bedrooms
- * Russell's Motel, 207-498-2567, 14 units
- * Caribou Inn and Convention Center, 73 rooms, 207-498-3733, 1-800-255-0466,
- * Crown Park Inn 207-498-3311, 59 rooms
- * Riverside Court Motel 207-498-6071, 20 rooms

Presque Isle

- (about 30 minutes south of New Sweden)
- * Budget Traveler Motor Lodge 1-800-958-0111, 207-769-0111, 62 rooms
- * Presque Isle Inn/Convention Center 1-800-533-3971, 764-3321, 151 rooms
- * Northeastland Hotel 1-800-

- 244-5321, 207-768-5321, 51 rooms
- * Northern Lights Motel 207-764-4441, 14 rooms
- * Hampton Inn 207-760-9292

Long Lake Area

- (about 30 minutes north of New Sweden)
- * St. Peter's Country Store & Cabin Rentals 207-834-5625
- * Cozy Log Cabins, St. Agatha 207-543-6349
- * Long Lake Motor Inn, St. Agatha 207-543-5006
- * Ginny's Lakefront camping 207-543-9387
- * Long Lake Camping 207-543-7563
- * Long Lake Camps 207-543-6390
- * Lakeview trailer sites 207-543-6331

Other locations

- * Peggy's Bed and Breakfast, Limestone 207-325-4675
- * Trafton Lake Campground, Limestone, 207-325-3439
- * Malabeam Campground, Loring 207-328-4643
- * Brookside Manor Motel, Van Buren 207-868-5158
- * Rum Rapids Inn, Crouseville 207-455-8069

Lists

- * Do a lodging search at Cari-

Places To Eat

Caribou

- Burger Boy Sweden Street 498-2291
- Burger King Bennett Drive 498-3500
- Cindy's Sub Shop Sweden Street 498-6021
- Far East Kitchen Bennett Drive 493-7858
- Farm's Bakery 118 Bennett Drive 493-4508
- Frederick's South Side South Main St. 498-3464
- Greenhouse Restaurant Rt. 1 & 164 498-3733
- Houlton Farms Dairy (Ice Cream) Bennett Drive 498-8911
- Jade Palace Restaurant Skyway Plaza, Bennett Drive 498-3648
- Marijo's S. Main St. 493-1555
- McDonald's Bennett Drive 498-2181
- Napoli's Downtown 492-1102
- Ouellette's Variety Sweden St. 498-6768
- Par & Grill Bennett Drive 492-0988
- Pizza Hut Bennett Drive 498-8523
- Reno's Family Restaurant Sweden Street 498-8559
- Subway Bennett Drive 493-4520
- Tim Horton's Bennett Drive 492-0363

Stockholm

- Eureka Hall Center of town (reservations suggested) .. 896-3196

New Sweden

- Northstar Variety (hot dogs & snacks) Rt. 161 896-3239

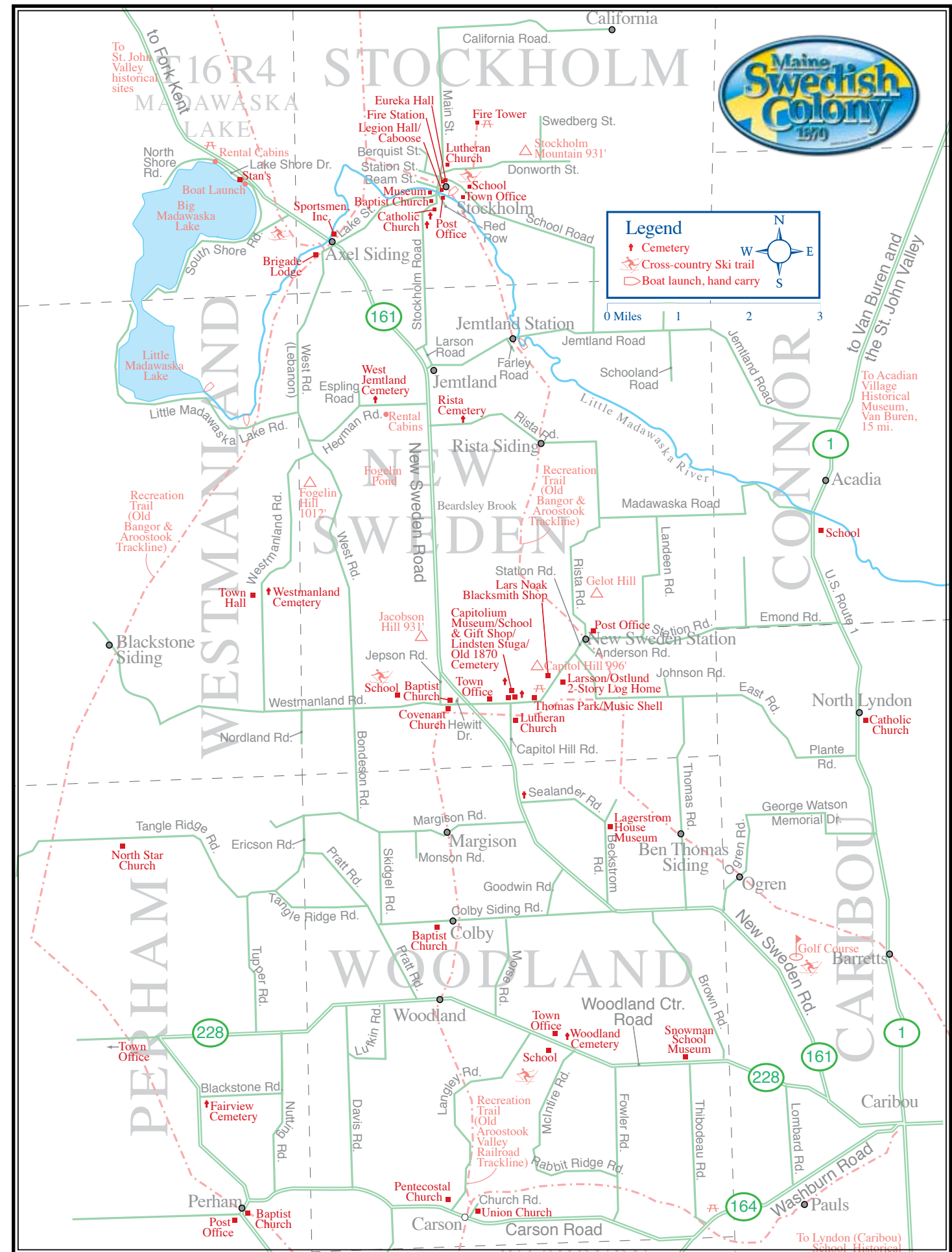
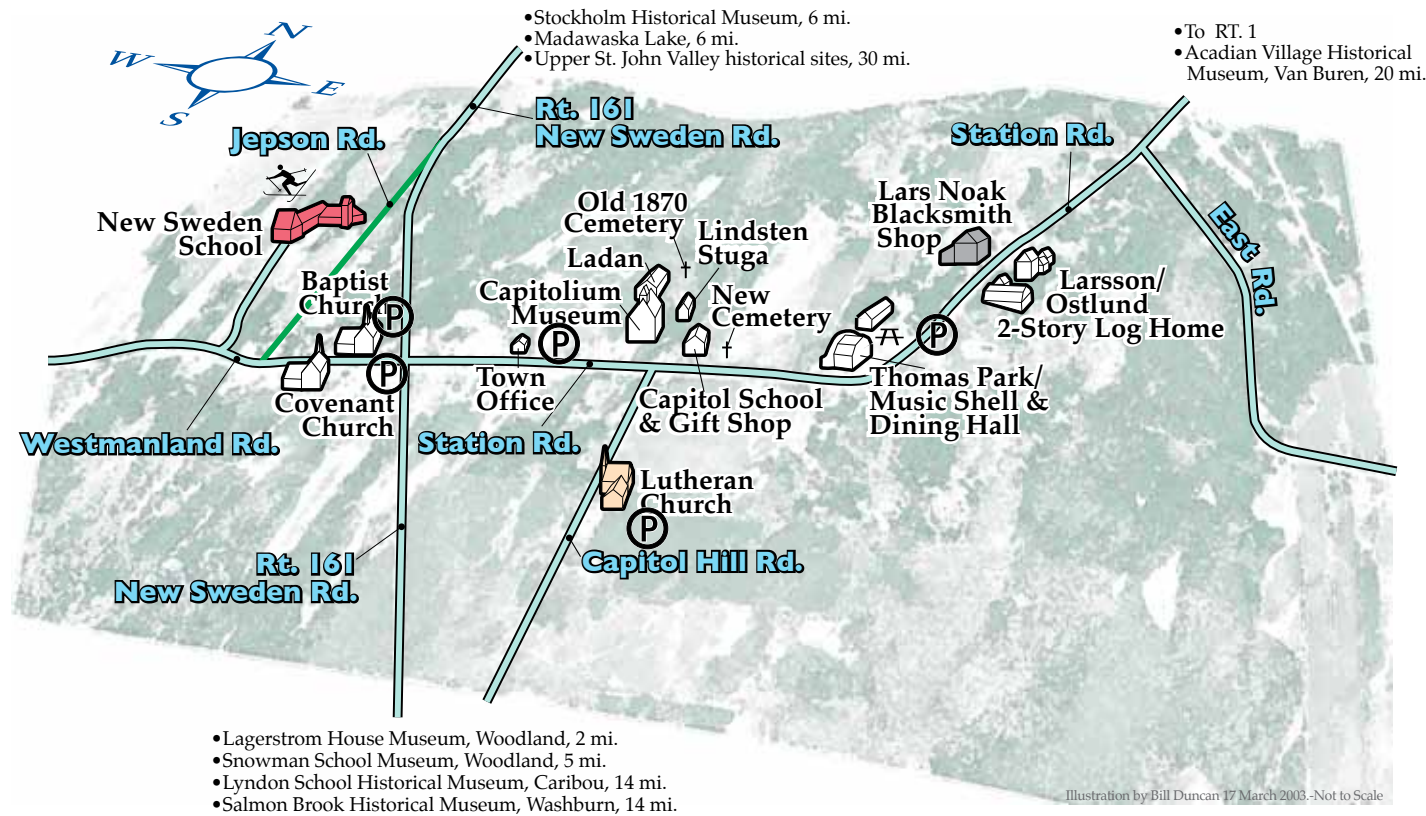


Picking lupines for the midsommarstång (Midsummer Pole).

Historic and Cultural Sites in New Sweden

Please park on the north side of Station Road or designated parking areas and take the shuttle bus.

P = PARK-



Stockholm 130th Celebration

Saturday 2 July, 2011

- **Stockholm 130th Anniversary Celebration;** many activities planned around the week of July 4th, 2011; visit MaineSwedishColony.info and click on the calendar; FMI: Rosemary Hede, 207-896-3177; Host:
- **TBA Community Center Open House:** Stockholm Community Center (school); ; visitor's pass available; FMI: Rosemary Hede, 207-896-3177; Host:
- 6 pm Dinner at Legion Hall before the Show
- 6:30 pm **Variety Show**, Legion Hall; FMI: Kathy Robinson, 207-896-7909

Sunday, 3 July, 2011

- 10 am **St. Theresa's Chicken BBQ:** St. Theresa's Catholic Church; Chicken and fixings; \$8; FMI: Donna Campbell, 207-896-3024; Host:
- after BBQ **Museum Open House:** Stockholm Historical Society Museum; New displays: Franny's Garage, Dick's Barber Shop, Winter Sports, Madawaska Lake;

Monday 4 July, 2011

- 6 am **Swedish Pancake Breakfast:** Brigade Lodge; until 9:00 am; bean-hole beans, berries and whipped cream, yummy! line-up early; FMI: John Walsh, 207-896-3331; Host:
- 11 am **4th of July Parade:** starts on Lake Street, ends at the school; grand marshals TBA; floats line up at 10 am; FMI: TBA; Host:
- After the parade the Lutheran Church will sell strawberry shortcakes at the Knock-out replica next to the Legion and the Legion will be selling hotdogs and hamburgers
- **TBA Boat Parade:** Madawaska Lake; Tentative, all boaters welcome; FMI: TBA;

Tuesday, 5 July, 2011

- **TBA Games Day:** Ball Park or Community Center?; Tentative, 5K run, Games; FMI: TBA; Host: Stockholm Historical Society



St. Peter's Country Store and Cabin Rentals

www.CrossLakeMaine.com

Jules St. Peter
3580 Caribou Road, Cross Lake, ME 04779
Jules@fairpoint.net
207-834-5625



Midsommar book design by **WilliamLDuncan.com**
Original fine art & prints
Cross-media communication design

207.896.3461



Annie Sandstrom, Christine Johnson, May Sandstrom from Stockholm.

ANDERSON'S STORE

Family Owned Since 1905
207-896-5858

- Quality Meats
- Fresh Baked Goods
- Produce
- Gas
- On ITS83
- Open 6-6 Mon.-Sat. Sun. 10-3



327 Main St. • Stockholm



24 Hour Service • Free Estimates • Portable Toilets
Residential • Commercial • Industrial

Peterson's
Septic Service
(207) 498-2770

128 Plante Road
Caribou, ME 04736

Richard Newland
rnewland@maine.rr.com

Thanks to all of our Midsommar Partners!

If you would like to become a partner,
call the black-fly twins --
Jerry Nelson or Bill Duncan
207-896-3461

or sign up on the web site:
www.MaineSwedishColony.info
info@MaineSwedishColony.info

First Baptist Church of New Sweden



Regular schedule:
Sunday School 9:30 am
Worship Service 10:30 am
Coffee & fellowship after

17 Westmanland Road
207.896.3392
www.fbcns.com

Hosting Midsommar
Frukost for our food pantry
& an open house

JEPSON FINANCIAL ADVISORS, PA

Registered Investment Advisor

**Investment Consultation &
Portfolio Management Services**

24 Sweden St., Suite 103
Caribou, ME 04736 • 207-492-2222

GRIFFETH

FORD
LINCOLN - MERCURY

Griffeth Ford Lincoln Mercury Mitsubishi and Honda
PO Box 937 213 Main St.
Caribou, Maine 04736 Presque Isle, Maine 04769
207-496-3111 207-764-4129



"Your Full FTD Florist"

Johnson Florist, Inc.

AIRPORT MALL, 1129 UNION ST.
BANGOR, MAINE 04401
207-947-6860
BERT JOHNSON



KEEPING OUR RURAL HERITAGE ALIVE

Echoes Magazine

Giving traditional values
new life in today's society

One year (4 issues) \$20
Two years (8 issues) \$35

P.O. Box 626
Caribou, ME 04736
(207) 498-8564

www.echoesofmaine.com

John E. Olson (1841-1929) was an early settler in New Sweden, immigrating in 1871. He was a farmer and violin maker, producing at least one double violin. He and his wife Hannah (1841-1926) had several children, including Victoria (1886-1924), Amanda (1877-1922), and Mathilda (1873-1953) who married Oren Anderson. Mathilda Olson Anderson's son was Clifford Anderson (1899-1953) who married Dagmar Espling in 1931.

A copy of this poem was given to Anders Tidstrom of Sweden by Katarina Hanson (1881-1972) in 1970 when he visited New Sweden, Maine. In early 2009 the poem was emailed in Swedish



back to Maine and translated by Paul Carlson. John and Hannah Olson are buried at Capitol Hill Cemetery in New Sweden, Maine. The English translation of the poem is beside the original Swedish version.

Voyage from Sweden

Written by John E. Olson (1841-1929)

We traveled from our homeland
in the Lord's guiding hands
fortunate
free from danger
to New Sweden where we live.
We praise the Lord's abundant love
that we remain, body and soul
lovingly preserved.

Here and there upon this earth
we meet our daily trials and toil
but lighter here than on old soil
its still a vale of tears.
This isn't yet our proper home
without a rest we still must roam
with praise and thanks to God our father
for the eternal kingdom he holds for us.

Yes, many friends were parted
back home with sorrow and tears
With God we'll reunite
and never more be separated.
There will be a glorious choir
that will never part, as here
that will sing in perfect harmony
with praise to Jesus, dear.

Öfverresa från Sverige

af John E. Olson

Vi reste från vårt fosterland
I genom Herrens styrda hand
Ja, lyckligt öfver att ej vi
I någon fara komma i,
Till nya Sverge där vi bor
Wi prisa Herrans kärlek stor,
Att ännu vi till kropp och själ
äro bevarade jemväl

Me här som där på jorden är
fins möda strider och besvär
fast mycket bättre här än där
men jemrens dal det ändå är
Och är ej här vi skola bo
Och för Guds barn fins ingen ro,
men pris och tack vår Gud och far
Ett evigt rike för oss har

Ja, många vänner skildes åt,
I fosterland med sorg och gråt,
Hos Gud vi all träffas få,
och aldrig mer vi skiljas då,
en härlig sångkör bliver där,
som aldrig skiljas såsom här,
Wi skola på fullkomligt vis
En gång få sjunga Jesu pris



17, 18, 19 June, 2011 Calendar of Activities

Friday 17 June, 2011

- **American Girl Doll Raffle:** at NSHS museum; Swedish-American Girl doll "Kirsten Larson" in her handmade Swedish National Costume; the Kirsten Larson Doll has been retired making her ever more valuable; Value \$250; Tickets: 1 for \$2 or 3 for \$5; tickets available at the New Sweden Museum afternoons; Host: New Sweden Historical Society; costumes made and donated by Judy Holmquist
- **9 am Flower gathering:** meet at New Sweden Historical Museum or on

Carlstrom Hill, Rt. 161, above Madawaska Lake; volunteers bring garden clippers, waterproof shoes, and 5 gal buckets; 4-5 vehicles needed; meet at Museum; FMI: Debbie Eustis-Grandy, 207-896-5240; Host: New Sweden Historical Society

- **11 am (after flower gathering) Set up museum grounds:** New Sweden Historical Museum; roustabout volunteers are needed to help setup tents, tables, chairs; Ralph might cook a hot-dog; meet at Museum; FMI: Debbie Eustis-Grandy, 207-896-5240; Host: New Sweden Historical Society

- **9 am Nylander Museum of Natural History:** Main Street, Caribou; displays of local natural history and collections by Swedish Colony naturalist Olof Nylander; until 5pm; donation; FMI: Jeanie McGowan, 207-493-4209; Host: Nylander Museum

- **afternoon Suggestions for Friday afternoon:** visit Stockholm Museum, self-guided tour of Colony using guidebook map; New Sweden Cemetery; drop by the museum and

get help finding your Swedish ancestors; visit Ostlund Farm pond and fields with your picnic lunch; geocaching; walking trail at Thomas Park; Nylander Museum and the Caribou Historical Center in Caribou; please make suggestions; FMI: Bill Duncan, 207-896-3461;

- **12 pm Caribou Historical Society Museum opens:** Presque Isle Road; displays of local history, ; until 4 pm; open Saturday too; donation; FMI: Dennis Harris, 207-498-2556; Host: The Caribou Historical Center & Museum

- **1 pm Help In Finding Your Swedish Ancestors:** NSHS Museum; Tentative: Lynn Johnson would love to help you find you're your missing Swedish ancestors. Drop by and visit with Lynn, but make sure you bring whatever information you already have on the ancestors for whom you searching!!; Want to know where they came from in Sweden? Did other family members immigrate too? Were they buried in an unmarked grave? Do you have unknown relatives still living in the New Sweden area? Also Saturday 9 am - 1 pm and, Sunday 2-3:30 pm; donation; FMI: Lynn Johnson, email: newswedengenealogy@gmail.com; Host: New Sweden Historical Society

- **1 pm NSHS Museum open:** ; artifacts from the Swedish Colony; Regular time; open every day 12-4 pm; call to confirm; FMI: Debbie Eustis-Grandy, 207-896-5240; Host: New Sweden Historical Society

- **1 pm Sled Dog Kennel Tours:** Heywood Kennel, 141 S. Main St., Stockholm; Learn the history of Dog Sledding in Sweden; see a professional racing kennel set up; Lindy and Kevin will answer all questions about their racing and dog sled rides; free; FMI: Lindy Howe, 207-896-3038; Host: Heywood Kennel

- **2 pm Stockholm Museum open:** Stockholm; large collections genealogy, photos and artifacts, veterans room, "Annie's Shop" country store recreation, history on the mills; a great place to stop in before the Legion Supper across the street; donations; FMI: John & Rosemary Hede, 207-896-3177; Host: Stockholm Historical Society

- **6 pm Stockholm Legion supper:** Stockholm Legion Hall; Swedish meatballs, mashed potatoes, rolls, vegetables, carrot jello, homemade desserts, bar service; \$10 reservations or at the door; FMI: Kathy Robinson, 207-896-7909; Host: American Legion, Stockholm

- **7 pm Swedish dance & entertainment:** Stockholm Legion Hall; we are looking for local talent; \$2 suggested donation for entire family; FMI: Bill Duncan, 207-896-3461; Host: Maine's Swedish Colony, Inc.

Saturday 18 June, 2011

- **4:30 am Fishing Derby:** Cross Lake Landing; must have ticket to qualify; breakfast 4:30 - 9 and lunch available; until 6 pm.; any Fish River lake; prizes: 2 biggest trout \$200 & \$100; 2 biggest salmon \$200 & \$100; Lucky ticket draw: two kayaks; \$5 entry fee; FMI: Herb Ketch, 207-498-8430; Host: Sportsmen Inc.

- **7 am Midsommar Frukost:** Thomas Park, dining hall; (Midsummer Breakfast) until 9 am; proceeds to benefit food pantry; donations welcome; \$5 adults, \$3 children; FMI: Chris Hearn, 207-896-3392; Host: First Baptist Church, New Sweden

- **all day Parking is restricted:** on Museum grounds; museum yard is reserved for handicapped parking and the bus stop;

park only on the north side of the Station Road, a bus is available between the sites and parking areas;

- **9 am Mini bus shuttle:** between the Museums and parking areas; until 2 pm; please park only on the north side of the Station Road; handicapped parking only at museum; a bus runs continuously to parking areas: Town Hall, Lutheran Church, behind North Star Variety, Baptist Church, Thomas Park, and Blacksmith shop; cosponsored by Maine Swedish Colony, Inc.; bus \$1 donation for the day; FMI: Debbie Eustis-Grandy, 207-896-5240; Host: New Sweden Historical Society/Maine's Swedish Colony, Inc.

- **9 am Välkommen-Bienvenue-Welcome table:** at entrance to grounds; stop by to join or renew your membership; raffles include American Girl doll; donations accepted; FMI: William Duncan/Kathy Robinson, 207-896-3461; Host: New Sweden Historical Society/Maine's Swedish Colony, Inc.

- **9 am Capitolium Museum open:** Museum; raffles include: American Girl doll Kirsten Larson; T-shirts on sale inside; memberships available; donation; FMI: Debbie Eustis-Grandy,

207-896-5240; Host: New Sweden Historical Society

- **9 am Lindsten Stuga tours:** behind museum; traditional Swedish Colony home; donate at the museum; FMI: Connie Bondeson, 896-5590; Host: New Sweden Historical Society

Historical Society

- **9 am Gift Shop/Capitol School Museum:** Capitol School; ; new items, many Scandinavian gifts, local arts and crafts; new one-room school house displays and artifacts; donations; FMI: William Duncan, 207-896-3461; Host: Maine's Swedish Colony, Inc.

- **9 am Arts/Folk Life Displays:** near Museum; until 4 pm.; exhibitors

please call to reserve a space; demonstrations/activities are encouraged; no fee to display only; \$20 per site; FMI: Doug Anderson, 207-896-5807; Host: New Sweden Historical Society

- **9 am Help In Finding Your Swedish Ancestors:** NSHS Museum; Tentative: Lynn Johnson would love to help you find your missing Swedish ancestors. Drop by the New Sweden museum and visit with Lynn, but make sure you bring whatever information you already have on the ancestors for whom you searching; She's already found over 1500 immigrants that came to the New Sweden area. Maybe one of them is yours!! Also Friday 1-3 pm and Sunday 2-3:30 pm; donation; FMI: Lynn Johnson, email: newswedengenealogy@gmail.com; Host: New Sweden Historical Society





• 10 am **Larsson/Ostlund house tours:** Station Road; 2 story log house; traditional crafters; and Brenda Jepson's "Old Maine Swedish Farms" video will be playing all day; until 4 pm.; wood carver Tom Cote demonstrates traditional craft; walk down to the pond behind the house; Sunday by appointment, shuttle bus stop; donations; FMI: Gerald Nelson, 207-896-5789; Host: Maine's Swedish Colony, Inc.

• 10 am **Kubb, Viking lawn bowling:** near Capitol west side; fun and relaxing; FMI: John Erickson, ; Host: New Sweden Historical Society

• 10 am **Dala Horse painting:** behind museum; family activity until noon; small fee; FMI: Debbie Eustis-Grandy, 207-896-5240; Host: New Sweden Historical Society

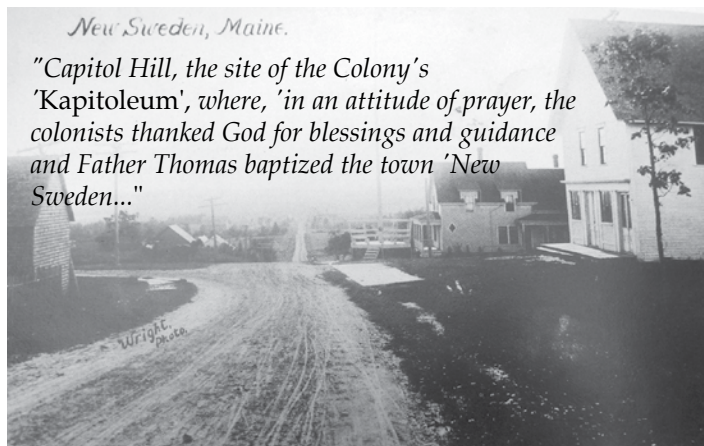
• 10 am **Hair wreaths:** Lindsten Stuga; make-your-own; bring small flowers, florist's wire, and

cutters to share; donation; FMI: Gusty Anderson, 207-896-3077; Host: New Sweden Historical Society

• 10 am **Noak Blacksmith Shop tours:** half mile east from museum on Station Road, look for the sign; demonstrations and displays in carpenter and blacksmith shops; open until 4 pm; donations; FMI: Matt Grandy, 207-896-5240; Host: Maine's Swedish Colony, Inc.

• 10 am **Coffee:** beside Museum; coffee, homemade sweets, and sandwiches (11 am) for sale; FMI: Gloria Ringdhal, 207-896-5574; Host: New Sweden Historical Society

• 10 am **Ice cream:** near Capitol School; home-



made; for sale; FMI: Janet Erickson, 896-5692; Host: Lutheran Happy Followers

• 11 am **Hot dogs:** near Capitol School; hot dogs and punch for sale by Ralph Ostlund family and Don Peters; Host: Maine's Swedish Colony, Inc.

• 11 am **Majstång (Maypole):** by Museum; family activity, trimming the Majstång, music & dancing; New Sweden Little Folk Dancers, bring your own seating and sun hat; gather bouquets and give them to the decorators; everyone dances around the pole; the maypole celebrates the colony's Swedish heritage and the start of our short summer; donate at entry;

FMI: Debbie Eustis-Grandy, 207-896-5240; Host: New Sweden Historical Society

• Noon **Swedish dance lessons:** Museum; everyone participates; instruction by Kathryn Larson and Karen Soderberg Hinchliffe to introduce you to the fun of Swedish Dancing; donations to muscians and instructors; Host: New Sweden Historical Society

• Noon **Lagerstrom House Museum open:** Corner of Beckstrom Road and Sealander Road, Woodland; well-preserved Swedish Colony home from 1896; furnishings, artifacts, tours; go south 1.3 mi. from Capitol, turn left on Sealander Rd, 1.3 mi.; open until 4 pm; donations; FMI: Linda Norsworthy, 207-498-3081; Host: Woodland Historical Society

• Noon **Snowman School Museum open:** Woodland Center Road (Rt 228), Woodland; one-room schoolhouse from 1895; open until 4 pm; displays, artifacts, tours; about 7 miles from Capitol; donations; FMI: Linda Norsworthy, 207-498-3081; Host: Woodland Historical Society

• 1 pm **Storytelling:** NS First Baptist Church; bring stories to share, a lawn chair and a sun hat; with Ray Hildebrand; Swedish (and English) sharing about the good old days;

FMI: Ray Hildebrand, 207-896-3052; Host: New Sweden Historical Society

• 1 pm **Sled Dog Kennel Tours:** Heywood Kennel, 141 S. Main St., Stockholm; Learn the history of Dog Sledding in Sweden; see a professional racing kennel set up; Lindy and Kevin will answer all questions about their racing and dog sled rides; free; FMI: Lindy Howe, 207-896-3038; Host: Heywood Kennel

• 2 pm **Baptist Church Open House:** First Baptist Church; ; the first church in New Sweden welcomes you; learn about our ministry starting in 1871, a year after the Colony was founded in New Sweden; visit our sanctuary and food pantry; Swedish hymnals and Bibles; light refreshments; free; FMI: Chris Hearn, 207-896-3392; Host: First Baptist Church, New Sweden

• 2:30 pm **Pickup museum grounds :** New Sweden Historical Museum; volunteers needed; roustabouts help take down tents, put away chairs and tables and cleanup museum grounds; pitch in anywhere; FMI: Debbie Eustis-Grandy, 207-896-5240; Host: New Sweden Historical Society

• 4 pm **Hambo Dance Workshop (tentative):** tentatively at New Sweden school; instruction in the Swedish Hambo dance by Kathryn Larson and Karen Soderberg Hinchliffe; no onlookers allowed; time and place details are not finalized; check back; suggested \$2 donation to instructors/ musicians; FMI: Bill Duncan, 207-896-3461; Host: New Sweden Historical Society

• 4 pm **Mass:** St. Theresa's, Stockholm; ; FMI:

Rosemary Hede, 207-896-3177; Host: St. Theresa's Catholic Church

• 4:30-6:00 pm **Swedish Supper:** at Svea Hall, Gustaf Adolph Lutheran Church, Capital Hill Rd.; meatballs, ham, mashed potatoes, rotmos, pickled herring, casseroles, salads, desserts, beverages; no reservations; continuous seating; raffles; \$12 adults, \$6 children under 10; FMI: Gordy Compton, 896-1009; Host: Gustaf Adolph Lutheran Church

• 5 & 5:30 pm **Smörgåsbord:** New Sweden School, Westmanland Rd.; heritage recipes from church members; two settings; always a sell-out; reserve your tickets early!; \$20-advanced tickets only; FMI: Judy Holmquist, 207-498-3525 after 5 pm. 27-A Park Street., Caribou, ME 04736; Host: Covenant Church Women

• 5:30 pm **Mass:** Sacred Heart, North Caribou; ; FMI: Rosemary Hede, 207-896-3177; Host: Sacred Heart Catholic Church

• 7:30 **Dance Lessons:** New Sweden school; instruction by Kathryn Larson and Karen Soderberg Hinchliffe

reintroducing the pleasure of Swedish Dancing; live music; suggested \$2 family donation to instructors/ musicians; FMI: Bill Duncan, 207-896-3461; Host: New Sweden Historical Society

• 8 pm **Dance:** New Sweden School; family activ-

ity; dance music by The Swedish Meatballs; dance instruction before; \$2.00 per family or donation; FMI: Debbie Eustis-Grandy, 207-896-5240; Host: New Sweden Historical Society

Big Game Tag and Weigh Station



Northstar Variety

204 New Sweden Road
New Sweden, Maine 04762
207-896-3239

Dave and Sara Anderson
Hunting and Fishing Licenses
Hunting, Fishing & Camping Supplies
Sportswear, Souvenirs,
Live Bait (seasonal)



THE COUNTY FEDERAL CREDIT UNION

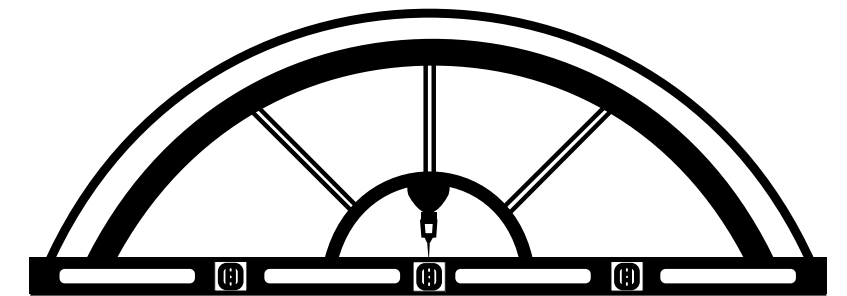
Presque Isle Caribou Fort Fairfield

768-5051

498-8756

472-5710

Where Membership Makes a Difference!



S.W. COLLINS CO.

The Pioneer Lumber Yard

Caribou
496-6723

Presque Isle
764-2720

Houlton
532-2263

www.swcollins.com

Sunday 19 June, 2011

• 4:30 **Fishing Derby:** Cross Lake Landing; must have ticket to qualify; breakfast 4:30 - 9 and lunch available; until 6 pm.; any Fish

River lake; prizes: 2 biggest trout \$200 & \$100; 2 biggest salmon \$200 & \$100; Lucky ticket draw: two kayaks; \$5 entry fee; FMI: Herb Ketch, 207-498-8430; Host: Sportsmen Inc.

• 9 am **Baptist Church Service:** at the Church; worship out of the weather;

scheduled early so you can also attend the service in the park; offering; FMI: Chris Hearn, 207-896-3392; Host: First Baptist Church, New Sweden

• 10:15 am **Colony Church Service:** Thomas Park; Interfaith worship; bring a hat; bleacher seating or

bring your own; rain location: Evangelical Covenant Church; offering goes to New Sweden Historical Society; FMI: T. Daniel Clayborne, 207-896-5202 or 896-5297; Host: Evangelical Covenant Church

• 11:15 am **Lunch in the Park:** Thomas Park; turkey, salads, and fixings, New Sweden Historical Society members are asked to bring a dish; rain or shine; \$8 adults, \$5 children ≤12; FMI: Jerry Nelson, 207-896-5789; Host: New Sweden Historical Society

• 12:45 pm **Carrying the Majstång (Maypole) to the Park:** From Capitol Museum on Station Road to Park; come down to the Museum and walk back to park; traditional Swedish walking music; Host: New Sweden Historical Society

• 1:00 pm **Noak Blacksmith Shop:** half mile east from museum on Station Road, look for the sign; demonstrations and displays in carpenter and blacksmith shops; open until 4 pm; donations; FMI: Matt Grandy, 207-896-5240; Host: Maine's Swedish Colony, Inc.

• 1:00 pm **Sunday Program:** Thomas Park; arrival of the Majstång (Maypole); Little Folk Dancers; music and entertainment Ron Fitch, trumpet; Silas Gustafson; Michelle Labbe; rain location at New Sweden School; donate in the Viking helmet; FMI: Debbie Eustis-Grandy, 207-896-5240; Host: New Sweden Historical Society

• 2 pm **Lagerstrom House Museum open:** Corner of Beckstrom Road and Sealander Road, Woodland; until 4 pm; well-preserved Swedish Colony home from 1896; about 3 miles from Capitolium museum,

furnishings, artifacts, tour; donations; FMI: Linda Norsworthy, 207-498-3081; Host: Woodland Historical Society

• 2 pm **Help In Finding Your Swedish Ancestors:** NSHS Museum; Tentative: Bring information on the ancestors for whom you searching; also Friday 1-3 pm and Saturday 9-1 pm; donation; FMI: Lynn Johnson, email: newswedengenealogy@gmail.com; Host: New Sweden Historical Society

• 2 pm **Capitolium Museum open:** Museum; after the program; donation; FMI: Debbie Eustis-Grandy, 207-896-5240; Host: New Sweden Historical Society

• 2 pm **Capitol School Museum/Gift Shop:** Capitol School; ; new items, many Scandinavian gifts, local arts and crafts; new one-room school house displays and artifacts; donations; FMI: William Duncan, 207-896-3461; Host: Maine's Swedish Colony, Inc.

Monday 20 June, 2011

• 1 pm **NSHS Museum open:** ; artifacts from the Swedish Colony; Regular time; open every day 12-4 pm; call to confirm; FMI: Debbie Eustis-Grandy, 207-896-5240; Host: New Sweden Historical Society



See Midsommar Calendar updates at: www.MaineSwedishColony.info



MidsommarFest is a project of the New Sweden Historical Society with help from many individuals and additional activities hosted by Maine Swedish Colony organizations.



Next year's Midsommar starts Friday 22 June, 2012 in the Maine Swedish Colony; plan to attend FMI: Debbie Eustis-Grandy, 207-896-5240; Host: New Sweden Historical Society

Contacts Midsommar Hosting Organizations

New Sweden Historical Society
Debbie Eustis-Grandy, 207-896-5240
116 Station Rd.
PO Box 33
New Sweden
207-316-7306

Evangelical Covenant Church
Dan Clayborne
40 Westmanland Rd.
New Sweden
207-896-5202

Gustaf Adolph Lutheran Church
Gordy Compton
PO Box 54
48 Capitol Hill Rd.
New Sweden

First Baptist Church
Chris Hearn
Parsonage 896-3392
17 Westmanland Road
New Sweden
207-896-3392

Crown of Maine Productions
Brenda Jepson
645 S. Shore Rd.
Stockholm
896-3416
CrownOfMaineProductions.com

Maine's Swedish Colony, Inc.
William Duncan
120 Station Road
PO Box 50
New Sweden
207-896-3461
www.MaineSwedishColony.info

Stockholm American Legion
Rudy St. Peter
Main Street
Stockholm
207-896-3455

Woodland Historical Society
Linda Norsworthy
1149 New Sweden Rd.
Woodland
207-498-3081

Stockholm Historical Society
280 Main Street
Stockholm, ME 04783
John & Rosemary Hede
jhede@ainop.com

Notes

• If it rains on Saturday, outdoor activities move to Sunday, 12 noon, Thomas Park. If it rains on Sunday: church service at the Evangelical Covenant Church, lunch at the Park dining hall, program is at the NS School.

• Parking is limited, do not block the north side road sides. Please use the mini bus.

• Midsommar Volunteers needed, Contact Debbie Eustis-Grandy, 207-896-5240, email: lakka@atiwi.com

• Brenda Jepson invites children, grades 1-5, to join little folk dancers: 896-3416.

• Contact the Caribou Chamber of Commerce about accommodations. www.cariboumaine.net

Midsommar Committee members:
Debbie Eustis-Grandy
Carolyn Hildebrand
Ray Hildebrand
Judy Holmquist
Elinor Hjulstrom
Brenda Jepson
Jerry Nelson
Kathy Robinson
Bill Duncan

Become a Midsommar Partner, or host a Midsommar activity--contact info@BillDuncan.info



Local Banking since 1936!

Keep your money at Home, where it helps build our Community.

AROOSTOOK SAVINGS & LOAN

Your Home Bank

Aroostook County Federal Savings and Loan Association

FDIC Insured

Equal Housing Lender

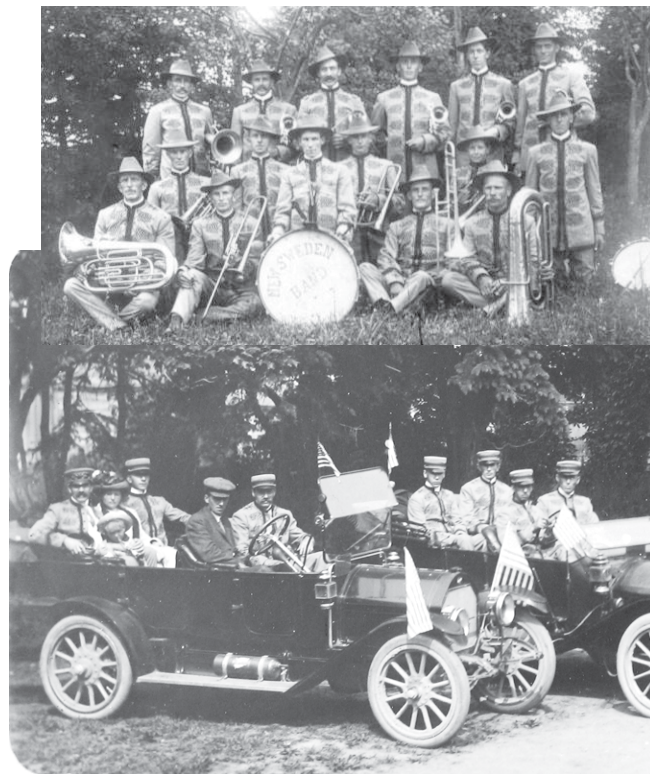
Carl Anderson, Owner
57 Sweden St.
Caribou, Maine 04736
207-493-4484 Store
207-227-4494 Cell
Carl@BuzzellsStore.com



BUZZELL'S
Live with your boots on

L. P. LARSSON
DEALER IN
GENERAL MERCHANDISE, FARM MACHINERY
AND LEADING BRANDS OF FERTILIZERS
Shipper of Aroostook Potatoes and Railroad Ties
Store at Jemmland Post Office, Storehouse at Jemmland Station,
Bangor & Aroostook R. R.

JEMTLAND, MAINE



New Sweden Band c. 1910 standing from left: Andrew Nelson, Edward Anderson, Alfred Strobeck, leader, Arthur Anderson, Walter Hedmand and Joseph Pearson. Sitting from left Peter Viberg, Isiah Stadig, Axel Trone, Henning Trone, Unknown, Albert Sealander, Gustaf Stadig, Herbert Uppling, John Uppling, Nels Lundin, The Drummer Harry Rogers



Stockholm, Maine
207-896-3196

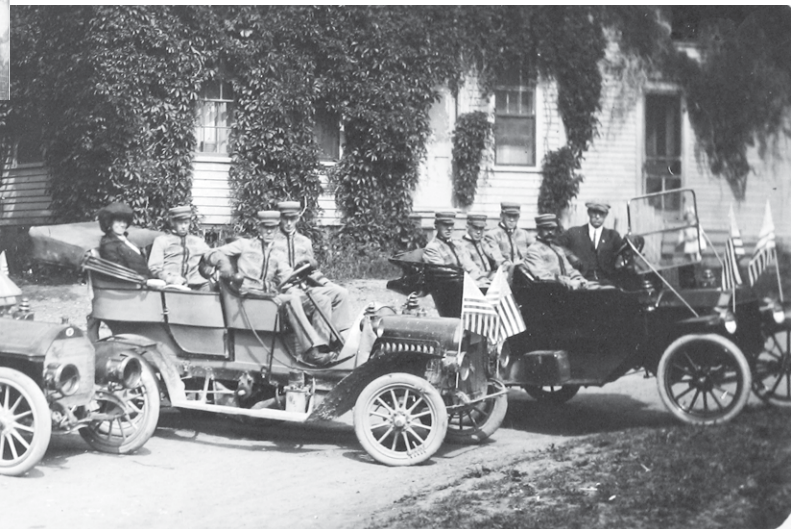
- Steaks and seafood; native produce; homemade breads & deserts; specials; bar service
- George, Pappa, and Danielle Mazerolle welcome you!
- Eureka Hall dining Room: Thur-Sat 4:30pm-9:00pm
- Side Track Tavern: pizzas, sandwiches and cold beer! (full bar): 4:30pm-11:00pm



J.D. Bouchard & Son
Construction

New Replacement Windows • New Construction
Additions • Garages • Metal Roofs • Finish Work
Free Estimates

Cell Phone 227-0335 Jeff Bouchard
Madawaska Lake, ME 04783



"Band at Caribou en route to Limestone 1912; First car: Karl Johnson in front seat with driver Lawrence Hemberg, Wolret Westman in center back seat; Second card: Walter Hedman, driver and Reinhold Anderson, back seat Mrs. Jacob Hedman; Third car: Henry Anderson in back; Fourth car: John Ringdahl, driver, and Edward Anderson, Mr. and Mrs. Strobeck in back" With new caps.



CROWN OF MAINE PRODUCTIONS, INC.
Brenda Nasberg Jepson

Historical and Cultural Films Featuring "The Story of the Acadians"
Brenda and Alan Jepson Phone: 207-896-3416
645 South Shore Road 207-483-6108
Stockholm, Maine 04783 Email: abjepson@nci3.net
CrownOfMaineProductions.com

Reno's Family Restaurant

Serving: Breakfast, Lunch & Dinner
Established 1965
"Specializing in Pizza"


117 Sweden Street Caribou, Maine 04736
Mon. thru Sat 5:30am-10:00pm
Sun. 6:30am-10:00pm

Phone: 496-5331 or 498-8559
e-mail: renosfamilyrestaurant@myfairpoint.net
web-page: www.renosfamilyrestaurant.com

Complete Take-Out Service

T.W. Willard, Inc.

862 Sweden Road Caribou, ME 04736 (207) 493-4507 Fax: 493-4546



MERCURY
The Water Calls
Reggie Thibodeau

465 Main Street • Caribou, Maine
207-493-1555



Marijos Cafe

Landeen & Sons Sanitation
Snow removal, backhoe work, any small project
Pavement repair, camp maintenance
207-227-1349 or 207-896-5777
152 Schooland Rd., New Sweden, ME 04762



THE STUBBORN SWEDE REPAIR SERVICE
219 New Sweden Road
New Sweden, Maine 04762

Providing Service and Preventative Maintenance for your
Outdoor Power Equipment
Laundry Equipment
and
Dryer Vent Cleaning



Mike Hewitt
207-227-3870

Re-conditioned Washers & Driers For Sale




ALICE'S BAKERY
498-6768 CARIBOU, ME.



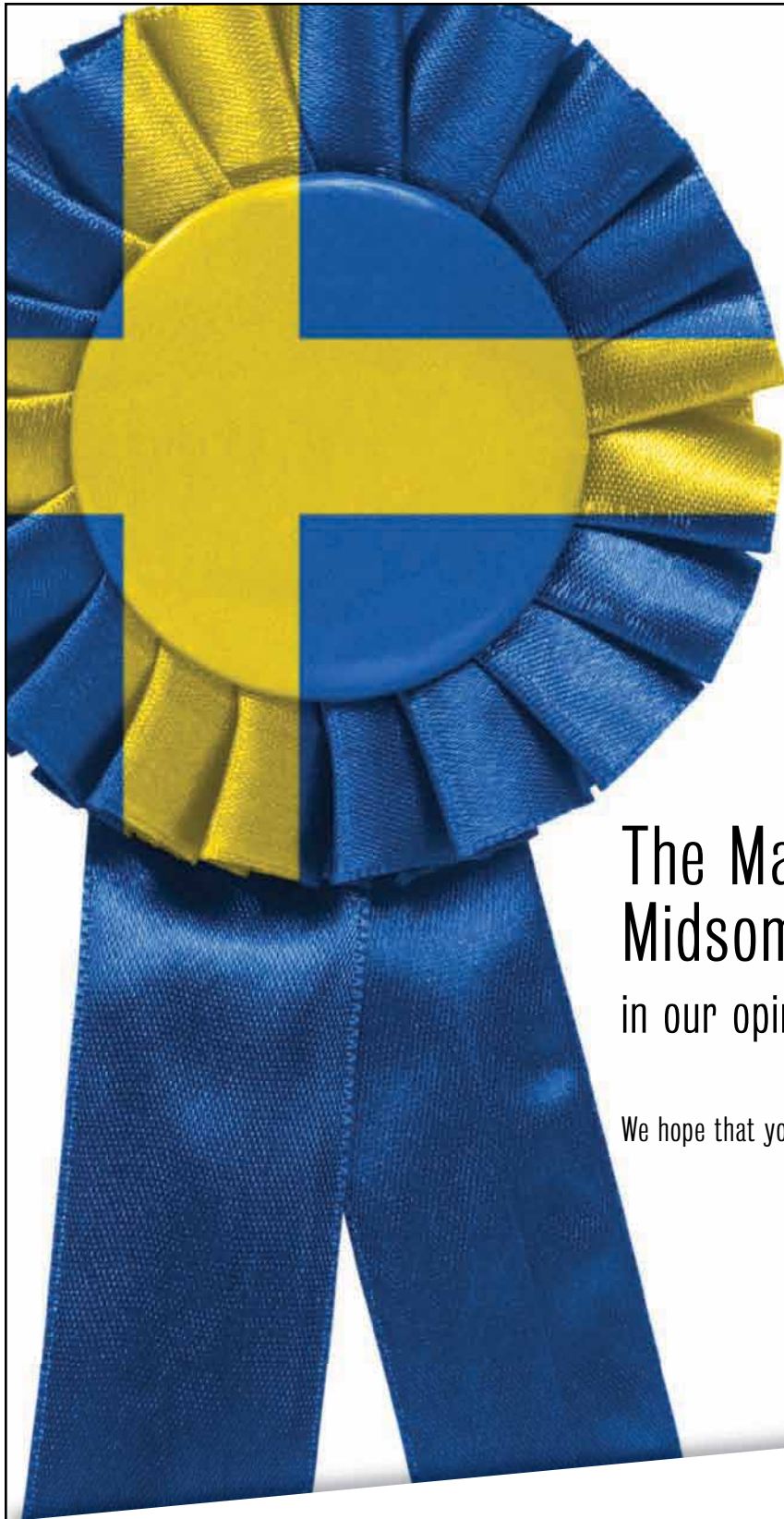
OUELLETTE'S VARIETY

342 Sweden Street
New Made to Order Hot Sandwiches

3 Premium Grades of Citgo Gas and much much more.

Pizza
Fried Chicken
Fresh Baked Goods
Frozen Foods
Grocery Items
Hot Dogs

Cold Sandwiches
Breads
Ice Cream
Beer, Liquor and Wine



The Maine Swedish Colony MidsommarFest: in our opinion, it's a blue ribbon event!

We hope that you enjoy your time at this great festival!

Hampden opening June 2011!



www.katahdintrust.com



Community Banking at its Best!

Ashland • Bangor • Caribou • Eagle Lake • Easton • Fort Fairfield • Houlton • Island Falls • Limestone • Mars Hill • Oakfield
Patten • Presque Isle • Van Buren • Washburn • Commercial Loan Offices: Bangor & Scarborough